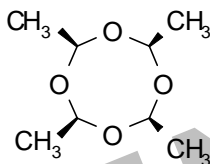


Material Safety Data Sheet

Product Name: METALDEHYDE

SECTION 1. CHEMICAL PRODUCT AND COMPANY INFORMATION

Product name: Metaldehyde TC
CAS code: 108-62-3
Chemical name: 2,4,6,8-tetramethyl-1,3,5,7-tetraoxacyclooctane
Molecular weight: 176.2
Chemical formulation: (C₂H₄O)₄
Chemical structure:



Use: Control of slugs and snails in agriculture and horticulture
Manufacturer: Nanjing Essence Fine-Chemical Co., Ltd
Address: 5th Floor, Suoye Road 18#, Nanjing, China
Telephone Number: +86 25 86465997
 +86 25 86466001
Fax Number: +86 25 86455985
Website: www.essencechem.com

SECTION 2. COMPOSITION/INFORMATION ON INGREDIENTS

<u>Hazardous Component Name</u>	<u>CAS-No.</u>	<u>Average by Weight</u>
Metaldehyde	108-62-3	98%

SECTION 3. HAZARDS IDENTIFICATION

Flammable. Harmful if swallowed. May cause eye and skin irritation, May cause respiratory tract irritation.

SECTION 4. FIRST AID MEASURES

Eye contact: Flush eyes with plenty of water for at least 15 minutes, occasionally lifting the upper and lower lids. Get medical aid.

Skin Contact:	Flush skin with plenty of soap and water for at least 15 minutes while removing contaminated clothing and shoes.
Ingestion:	Do NOT induce vomiting. Allow the victim to rinse his mouth and then to drink 2-4 cupfuls of water, and seek medical advice.
Inhalation:	Remove from exposure to fresh air immediately.
Note to Physician	Treat symptomatically and supportively

SECTION 5. FIRE FIGHTING MEASURES

Flash point:	50-55°C
General information:	As in any fire, wear a self-contained breathing apparatus in pressure-demand and full protective gear. Water Reactive. Material will react with water and may release a flammable and/or toxic gas.
Extinguishing media:	Do not use water directly on fire. In case of fire, use water, dry chemical, chemical foam, or alcohol-resistant foam.

SECTION 6. ACCIDENTAL RELEASE MEASURES

General information:	Use proper personal protective equipment as indicated in Section 8.
Spill and Leak procedures:	Vacuum or sweep up material and place into a suitable disposal container. Remove all sources of ignition. Use a spark-proof tool.

SECTION 7. HANDLING AND STORAGE

Handling:	Remove contaminated clothing and wash before reuse. Avoid contact with eyes, skin, and clothing. Avoid ingestion and inhalation.
Storage:	Store in a cool, dry place. Store in a tightly closed container, away from food, drink or animal feeding stuffs. Keep away from children and pets. Vacuum or sweep up material and place into a suitable disposal container. Remove all sources of ignition. Use a spark-proof tool.

SECTION 8. EXPOSURE CONTROLS / PERSONAL PROTECTION

Engineering Controls:	Use adequate ventilation to keep airborne concentrations low.
Eye Protection:	Wear safety glasses and chemical goggles if splashing is possible.
Skin protection:	Wear appropriate protective gloves to prevent skin exposure.
Clothing:	Wear appropriate protective clothing to minimize contact with skin.
Respirators::	Wear a approved full-face piece airline respirator in the positive pressure mode with emergency escape provisions

SECTION 9. PHYSICAL AND CHEMICAL PROPERTIES

Form	white crystal powder
M.p.	246°C, subliming at 110-120°C
Solubility(17°C)	200g/l water; °C soluble in benzene, chloroform; sparingly soluble in diethyl ether, ethanol.

SECTION 10. STABILITY AND REACTIVITY

Stability:	Not available
Conditions to Avoid:	Ignition sources
Incompatibilities with Other Materials:	Not available
Hazardous Decomposition Products:	Carbon monoxide, carbon dioxide.

SECTION 11. TOXICOLOGICAL INFORMATION

Acute toxicity:	Not available.
Eye irritation:	Essentially not an irritant. All transient minor inflammation cleared by day 2, post dose. Not an irritant
Skin irritation:	Skin sensitization: Not a sensitizer(guinea pig)

SECTION 12. ECOLOGICAL INFORMATION

This product may be fatal to dogs, other pests, and wild animals if eaten. May be toxic to water inhabitants. Do not contaminate water bodies.

SECTION 13. DISPOSAL CONSIDERATIONS

Pesticide Wastes: Wastes resulting from the use of this product may be disposed on site by use according to the label or at an approved waste disposal facility. State and local authorities should be contacted to determine the current regulations.

Containers: The container may be disposed in a sanitary landfill or by incineration after completely emptying the bag into the application equipment. State and local authorities should be contacted to determine the current regulations.

SECTION 14. TRANSPORT INFORMATION

Not applicable

SECTION 15. REGULATORY INFORMATION

Not applicable

SECTION 16. OTHER INFORMATION

All information and instructions provided in this Material Safety Data Sheet (MSDS) are based on the current state of scientific and technical knowledge at the date indicated on the present MSDS and are presented in good faith and believed to be correct. This information applies to the PRODUCT AS SUCH. In case of new formulations or mixes, it is necessary to ascertain that a new danger will not appear. It is the responsibility of persons on receipt of this MSDS to ensure that the information contained herein is properly read and understood by all people who may use, handle, dispose or in any way come in contact with the product. If the recipient subsequently produce formulations containing this product, it is the recipients sole responsibility to ensure the transfer of all relevant information from this MSDS to their own MSDS.